



SHADOW BOX 23"

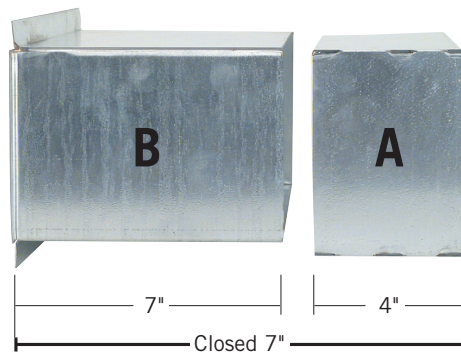
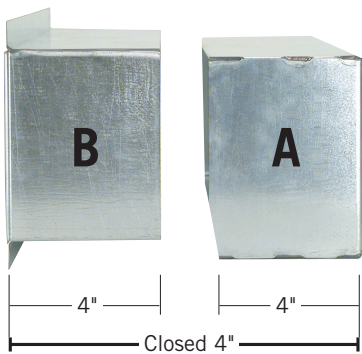
THRU-THE-WALL INSTALLATIONS

- Use to ensure beer shanks share the walk-in cooler temperature
- Covered by wall mount drip tray on the front
- Galvanized construction, easy to punch shank holes through



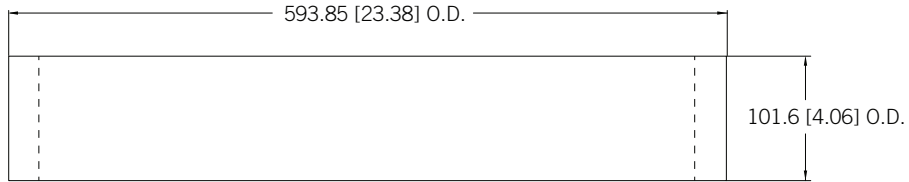
SB492L
Long Sleeve

SB492S
Short Sleeve

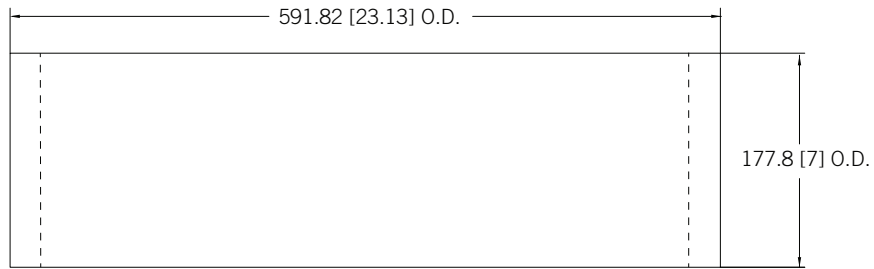


Part No.	Description	Sleeve	Length	Shipping Weight
☐ SB492L	Shadow box, galvanized	7"	23"	4.5 kg
				10 lbs
☐ SB492S	Shadow box, galvanized	4"	23"	4 kg
				9 lbs

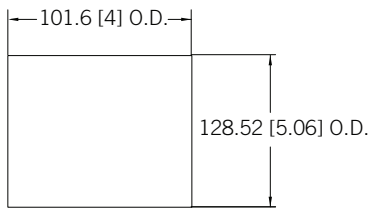
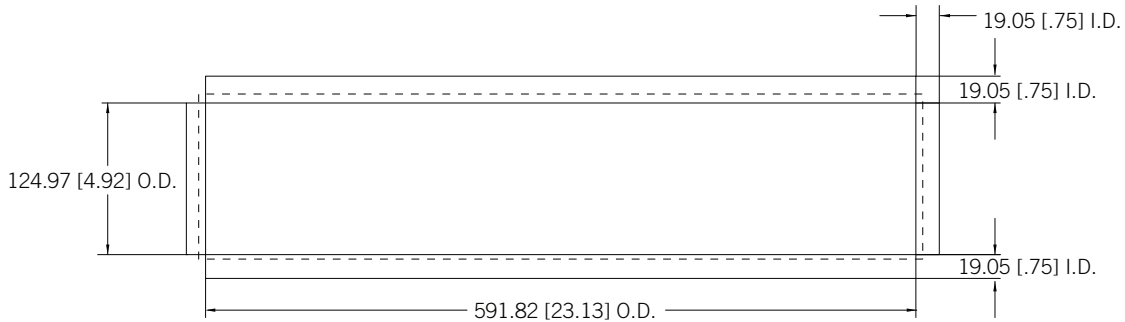
Dimensions



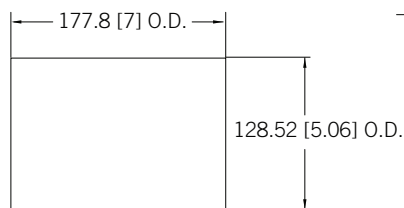
BOX



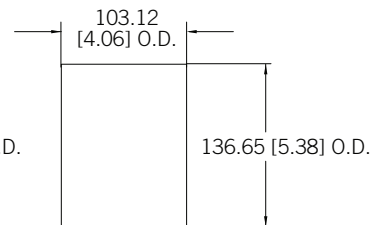
SLEEVE



SHORT SLEEVE



LONG SLEEVE



BOX