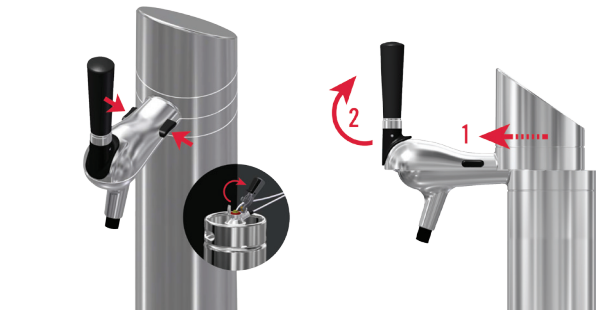




FlexiDraft™

REPLACING BEER LINE

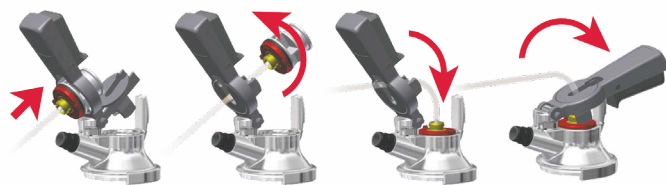
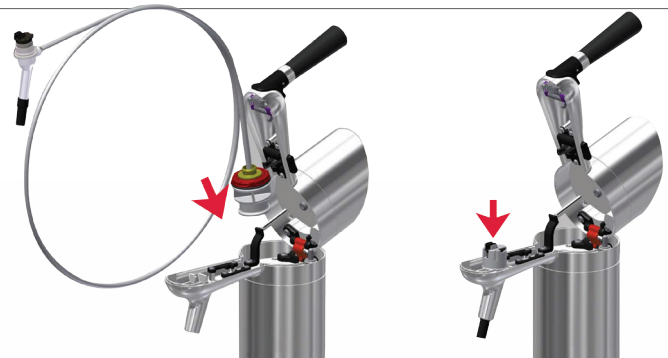


STEP 1

Open the the FlexiDraft™ tower by pressing the two buttons. (Make sure the keg coupler is disconnected first.) The upper part will move forward by itself, then lift.

STEP 2

Drop the keg coupler end of the one-way beer line into the tower column. Fix the beer outlet end to the faucet nozzle. Close the tower lid; it will snap securely into place.



STEP 3

Push the beer end of the one-way line into the keg coupler. Place the keg coupler on the new keg and press the handle down to tap the keg.



Toll-Free: 1-866-327-4159
www.micromatic.com

West

19791 Bahama St.
Northridge, CA 91324
(818) 701-9765
(818) 701-9844 Fax

Central

10726 North Second St.
Machesney Park, IL 61115
(815) 968-7557
(815) 968-0363 Fax

Southeast

15111 Dispense Ln.
Brooksville, FL 34604
(352) 799-6331
(352) 796-2429 Fax

Northeast

4601 Saucon Creek Rd.
Center Valley, PA 18034
(610) 625-4464
(610) 625-4466 Fax

FOLLOW US:



01820-D0417 ©2017 Micro Matic USA, Inc. All Rights Reserved.
Micro Matic reserves the right to change specifications without notice.