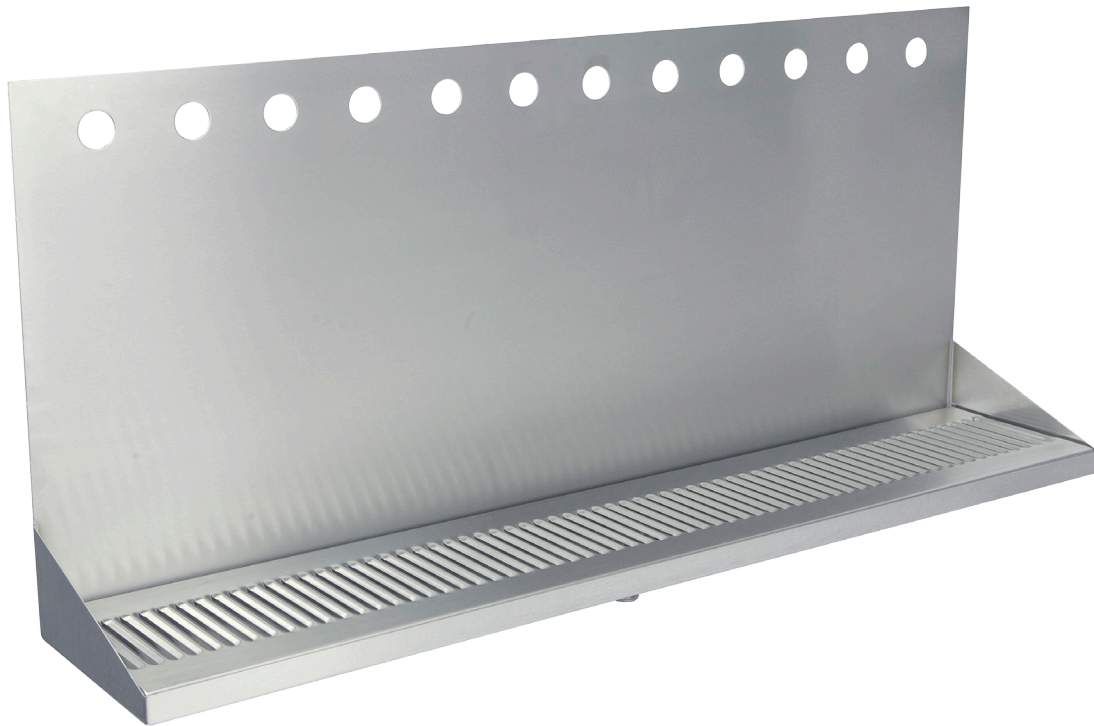




DRIP TRAY

WALL MOUNT SERIES - 12 HOLE

- Easy installation: beverage shanks mount through and secure tray to wall
- Robust 18 gauge stainless steel construction
- Welded corners, finished smooth for safety and appearance
- Fast draining, precision louvered screen



DP-332ELD-12-3

| Part No. | Faucets | Finish | Shipping Weight |
|--|---------|-------------------------|-----------------|
|  DP-332ELD-12-3 | 12 | Brushed Stainless Steel | TBD |

Dimensions

