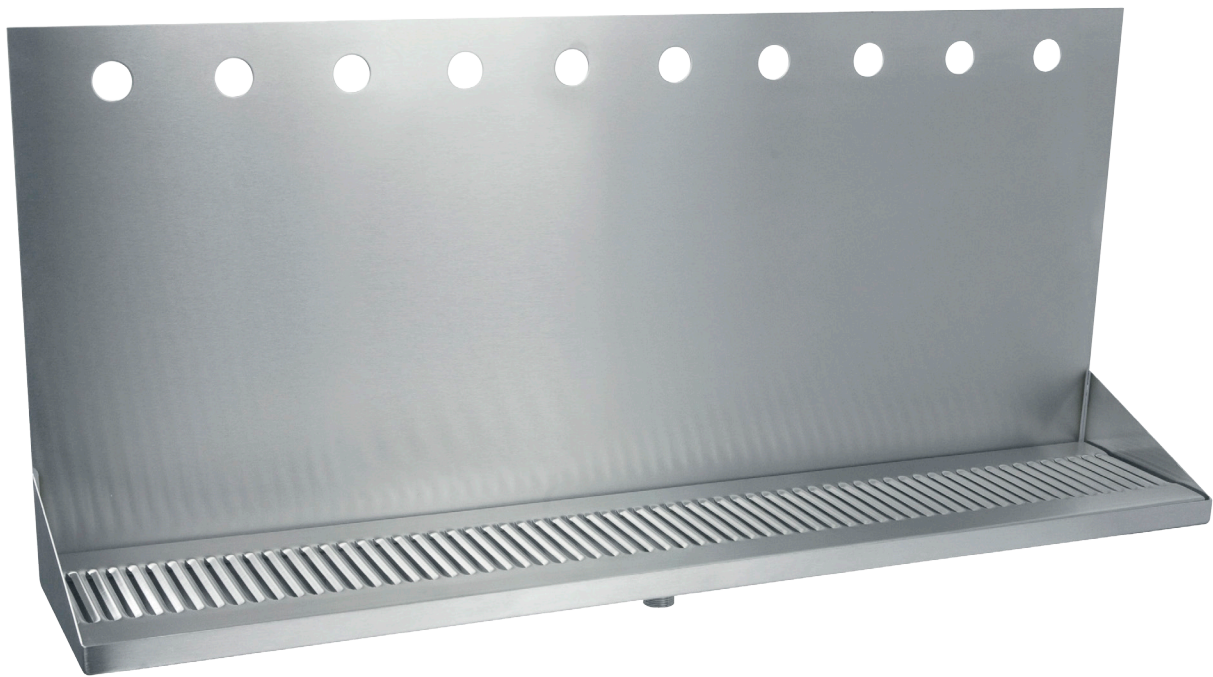




DRIP TRAY

WALL MOUNT SERIES - 10 HOLE

- Easy installation: beverage shanks mount through and secure tray to wall
- Robust 18 gauge stainless steel construction
- Welded corners, finished smooth for safety and appearance
- Fast draining, precision louvered screen



DP-332ELD-10-3

Part No.	Faucets	Finish	Shipping Weight
DP-332ELD-10-3	10	Brushed Stainless Steel	TBD

Dimensions

